

Lot 114 COOSE MISTY P

ID: 372217613680569

Breed: Simmental

Sex: Female

DOB: 05-Dec-2020

Owner: John Tuohy - Coose Whitegate Co Clare



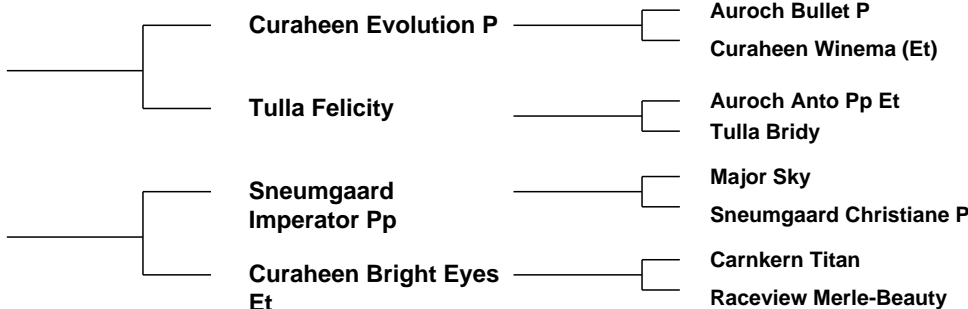
Breeder:

Sire: Tulla Jaguar P
F344

Sire Verified (SNP)

Dam: Coose Kim P
372217613670485

Dam Verified (SNP)



Evaluation Date: Oct 2022 Next Evaluation Date: 22-Nov-2022

Star Rating (Within Simmental breed)	Economic Indexes	€uro value per progeny	Index Reliability	Star rating (across all beef breeds)
★★★★★	Replacement	€160	42% (Average)	★★★★★★
	Terminal	€121	46% (Average)	

Calving Difficulty (births requiring considerable assistance; % 3 & 4)

When Mated With:	Value	Reliability
Beef cows Breed avg: 3.6%, All breeds avg: 3.91%	+2.6%	67% (High)
Beef heifers Breed avg: 8.33%, All breeds avg: 8.2%	Values and reliability for calving difficulty when mated with beef heifers are available from the animal search on www.icbf.com	

Star Rating (Within Simmental breed)	Key Replacement Profit Traits	Value	Reliability	Star rating (across all beef breeds)
Expected Progeny Performance				
★★★★★★	Docility (1-5 scale) Breed avg: 0.06, All breeds avg: 0.02	0.16 scale	41% (Average)	★★★★★★
★★★★★★	Carcass weight (kg) Breed avg: 19.85kg, All breeds avg: 17.18kg	+33.4kg	47% (Average)	★★★★★★
★★★★★	Carcass conformation (1-15 scale) Breed avg: 1.3, All breeds avg: 1.45	+1.48 scale	39% (Low)	★★★★★

Expected Daughter Breeding Performance				
	Daughter calving diff (% 3 & 4) Breed avg: 5.25%, All breeds avg: 5.33%	+5.1%	55%	
★★★	Daughter Milk (kg) Breed avg: 8.85kg, All breeds avg: 2.49kg	+7.5kg	39% (Low)	★★★★★★
★★★★	Daughter calving interval (days) Breed avg: -0.85days, All breeds avg: -0.87days	-0.6days	35% (Low)	★★★★

Additional Information:

Misty is a real muscle machine with a super body and top to her. Hetrozygous polled sired by stock bull Tulla Jaguar P. Dam Kim P is a first calved imperator daughter who comes from Curaheen Bright eyes who is Dam of Coose Jericho P and Coose Langer P both breeding exceptionally well.

Animal not scored.

Linear composites	Value	Reliability
Muscle		
Skeletal		
Function		

Herd data quality index
N/A

Copyright, Irish Cattle Breeding Federation ICBF

This report has been prepared by ICBF in good faith on the basis of information provided to it. No representation or warranty expressed or implied is made or given by ICBF as to the accuracy, reliability, completeness of this Report. ICBF shall not be liable for any losses (whether direct or indirect), damages, costs or expenses whatsoever, incurred or arising from any use of or reliance on this Report or the information contained in it by any person.