

VENDOR

James And Fiona Browne

Corbally Glanworth Co. Cork

Lot 1 CORBALLY KLASSIE V K ET

ID: 372219885560866

Breed: Simmental

Sex: Female

DOB: 02-Aug-2018

Owner: James And Fiona Browne - Corbally Glanworth Co. Cork

Breeder:

Sire: Curaheen Gunshot P
SI4147

Tiset Darwin P

Tiset Vagn P

Bucklands Molly

Curaheen Cheyenne
Et

Hillcrest Champion

Curaheen Washita (Et)

Dam: Corbally Vintage Katie (Et)
IE151553720551

Raceview King

Raceview Gladiator

Kilmichael Diamond

Corbally Katie

Kealod Desmond

Corbally Hannah



Star Rating (Within Simmental breed)	Economic Indexes	€uro value per progeny	Index Reliability	Star rating (across all beef breeds)
	Terminal Index	€96	42% (Average)	
★★★★★	Replacement Index Maternal Cow Traits : Maternal Progeny Traits :	€127 €73 €55	39% (Low) 38% 43%	★★★★★
	Dairy Beef			

Star Rating (Within Simmental breed)	Key profit traits	Index Value	Trait Reliability	Star rating (across all beef breeds)
Expected progeny performance				
	Calving difficulty (% 3 & 4) Breed ave: 5.27%,All breeds ave: 4.49%	+7.8%	48% (Average)	
★★★★★★	Docility (1-5 scale) Breed ave: 0.05,All breeds ave: 0.01	0.13 scale	49% (Average)	★★★★★★
★★★★★★	Carcass weight (kg) Breed ave: 21.75kg,All breeds ave: 15.99kg	+31kg	43% (Average)	★★★★★★
★★★★★★	Carcass conformation (1-15 scale) Breed ave: 1.36,All breeds ave: 1.38	+1.56 scale	40% (Average)	★★★★★

Expected daughter breeding performance				
	Daughter calving diff (% 3 & 4) Breed ave: 5.85%,All breeds ave: 5.83%	+4.66%	38% (Low)	
★★★★★	Daughter Milk (kg) Breed ave: 8.23kg,All breeds ave: 2.14kg	+9.2kg	40% (Average)	★★★★★★
★★★	Daughter calving interval (days) Breed ave: -0.06days,All breeds ave: -0.79days	-0.04days	36% (Low)	★★★

Additional Information:

ET Gunshot daughter out of the Corbally Herds Top Cow, Vintage Katie. Sweet heifer with figures to match. Sells with with Recipient cow IE341272360630

Linear composites	Value	Reliability
Muscle		
Skeletal		
Function		

Herd data quality index

N/A

Animal not scored.

Lot 2 CORBALLY HOPE 2

ID: IE151553760794

Breed: Simmental

Sex: Female

DOB: 02-Jan-2016

Owner: James And Fiona Browne - Corbally Glanworth Co. Cork

Breeder:

Sire: Milnafua Graduate
MFU

Milnafua Diamond

Hayton Walcott

Milnafua Velvet

Milnafua Barbie

Brinkton Vibrant

Milnafua Vertu

Dam: Corbally Dixie
IE151553730701

Raceview King

Raceview Gladiator

Kilmichael Diamond

Corbally Vixen

Camus Vibrant

Corbally Hannah



Star Rating (Within Simmental breed)	Economic Indexes	€uro value per progeny	Index Reliability	Star rating (across all beef breeds)
	Terminal Index	€83	48% (Average)	
★★★★★	Replacement Index Maternal Cow Traits : Maternal Progeny Traits :	€140 €87 €52	47% (Average) 46% 48%	★★★★★
	Dairy Beef			

Star Rating (Within Simmental breed)	Key profit traits	Index Value	Trait Reliability	Star rating (across all beef breeds)
Expected progeny performance				
	Calving difficulty (% 3 & 4) Breed ave: 5.27%,All breeds ave: 4.49%	+6.1%	49% (Average)	
★★★★★	Docility (1-5 scale) Breed ave: 0.05,All breeds ave: 0.01	0.18 scale	57% (Average)	★★★★★
★★★★★	Carcass weight (kg) Breed ave: 21.75kg,All breeds ave: 15.99kg	+27kg	52% (Average)	★★★★★
★	Carcass conformation (1-15 scale) Breed ave: 1.36,All breeds ave: 1.38	+1.1 scale	48% (Average)	★★

Expected daughter breeding performance				
	Daughter calving diff (% 3 & 4) Breed ave: 5.85%,All breeds ave: 5.83%	+4.26%	46% (Average)	
★★★★	Daughter Milk (kg) Breed ave: 8.23kg,All breeds ave: 2.14kg	+10.1kg	47% (Average)	★★★★★
★★★	Daughter calving interval (days) Breed ave: -0.06days,All breeds ave: -0.79days	+0.14days	43% (Average)	★★

Additional Information:

A 5 Star cow with good figures. Sells with her first calf at foot Corbally Kingpin a bull calf. This Hercules calf has lovely style and correctness about him. See Kingpins evaluations at end of catalogue

Linear composites	Value	Reliability
Muscle	102	52%
Skeletal	107	50%
Function	92	21%

Herd data quality index

N/A

Animal scored. Linear scores and weaning weights in evaluations

Lot 3 CORBALLY GUCCI VIP

ID: IE151553790789

Breed: Simmental

Sex: Female

DOB: 10-Dec-2015

Owner: James And Fiona Browne - Corbally Glanworth Co. Cork

Breeder:

Sire: Milnafua Graduate
MFU

Milnafua Diamond

Hayton Walcott

Milnafua Velvet

Milnafua Barbie

Brinkton Vibrant

Milnafua Vertu

Dam: Corbally Vip Katie (Et)
IE151553710550

Raceview King

Raceview Gladiator

Kilmichael Diamond

Corbally Katie

Kealod Desmond

Corbally Hannah



Star Rating (Within Simmental breed)	Economic Indexes	€uro value per progeny	Index Reliability	Star rating (across all beef breeds)
	Terminal Index	€93	49% (Average)	
★★★★★	Replacement Index Maternal Cow Traits : Maternal Progeny Traits :	€160 €102 €58	47% (Average) 46% 49%	★★★★★
	Dairy Beef			

Star Rating (Within Simmental breed)	Key profit traits	Index Value	Trait Reliability	Star rating (across all beef breeds)
Expected progeny performance				
	Calving difficulty (% 3 & 4) Breed ave: 5.27%,All breeds ave: 4.49%	+6.8%	50% (Average)	
★★★★★	Docility (1-5 scale) Breed ave: 0.05,All breeds ave: 0.01	0.09 scale	58% (Average)	★★★★★
★★★★★	Carcass weight (kg) Breed ave: 21.75kg,All breeds ave: 15.99kg	+31kg	53% (Average)	★★★★★
★★★	Carcass conformation (1-15 scale) Breed ave: 1.36,All breeds ave: 1.38	+1.38 scale	50% (Average)	★★★

Expected daughter breeding performance				
	Daughter calving diff (% 3 & 4) Breed ave: 5.85%,All breeds ave: 5.83%	+4.26%	47% (Average)	
★★★★★	Daughter Milk (kg) Breed ave: 8.23kg,All breeds ave: 2.14kg	+11.3kg	47% (Average)	★★★★★
★★★★	Daughter calving interval (days) Breed ave: -0.06days,All breeds ave: -0.79days	-1.08days	43% (Average)	★★★

Additional Information:

Gucci has the highest figures in the herd, a 5 Star Cow with great breeding lines behind her to back it up. Her full sister (Corbally Eire) was National Champion at Strokestown and Corbally Eires first calf, Lissadell Jackpot V.I.P. also became a National Champion and now stands in Bova A. I. Station. Sells with her heifer calf at foot Corbally Kucci Gucci sired by Bodybuilder See Kucci Guccis evaluations at end of catalogue

Animal scored. Linear scores and weaning weights in evaluations

Linear composites	Value	Reliability
Muscle	109	54%
Skeletal	118	52%
Function	98	22%

Herd data quality index

N/A

Lot 4 CORBALLY HEAVENLY VK ET

ID: IE151553740818

Breed: Simmental

Sex: Female

DOB: 28-Oct-2016

Owner: James And Fiona Browne - Corbally Glanworth Co. Cork

Breeder:

Sire: Anatrium Bodybuilder
AYX

Anatrium Viva (Et)

Carnkern Titan
Anatrium Lucky Et

Anatrium Theresa

Anatrium Jacob
Anatrium Gorgeous

Dam: Corbally Vintage Katie (Et)
IE151553720551

Raceview King

Raceview Gladiator
Kilmichael Diamond

Corbally Katie

Kealod Desmond
Corbally Hannah



Star Rating (Within Simmental breed)	Economic Indexes	€uro value per progeny	Index Reliability	Star rating (across all beef breeds)
	Terminal Index	€79	47% (Average)	
★★	Replacement Index Maternal Cow Traits : Maternal Progeny Traits :	€104 €58 €47	45% (Average) 44% 47%	★★★★★
	Dairy Beef			

Star Rating (Within Simmental breed)	Key profit traits	Index Value	Trait Reliability	Star rating (across all beef breeds)
Expected progeny performance				
	Calving difficulty (% 3 & 4) Breed ave: 5.27%,All breeds ave: 4.49%	+8.2%	48% (Average)	
★★★★★	Docility (1-5 scale) Breed ave: 0.05,All breeds ave: 0.01	0.09 scale	49% (Average)	★★★★★
★★★★★	Carcass weight (kg) Breed ave: 21.75kg,All breeds ave: 15.99kg	+27kg	49% (Average)	★★★★★
★★★★★	Carcass conformation (1-15 scale) Breed ave: 1.36,All breeds ave: 1.38	+1.6 scale	48% (Average)	★★★★★

Expected daughter breeding performance				
	Daughter calving diff (% 3 & 4) Breed ave: 5.85%,All breeds ave: 5.83%	+4.8%	44% (Average)	
★★★★★	Daughter Milk (kg) Breed ave: 8.23kg,All breeds ave: 2.14kg	+11.3kg	47% (Average)	★★★★★
★★	Daughter calving interval (days) Breed ave: -0.06days,All breeds ave: -0.79days	+1.03days	41% (Average)	★

Additional Information:

A Vintage Katie daughter by Anatrium Bodybuilder. A good solid heifer, with a lovely temperament and great figures. Really good breeding behind this lady

Linear composites	Value	Reliability
Muscle		
Skeletal		
Function		

Herd data quality index

N/A

Animal not scored.

Lot 5 CORBALLY HONEY V K

ID: IE151553780838

Breed: Simmental

Sex: Female

DOB: 25-Dec-2016

Owner: James And Fiona Browne - Corbally Glanworth Co. Cork

Breeder:

Sire: Kilbride Farm Bantry 10
S1476

Cairnview Snazzy

Popes Laird

Ravensworth Modesty

Kilbride Farm Fanni
9v

Seaview Prince-Charming
Kilbride Farm Mattie

Dam: Corbally Vintage Katie (Et)
IE151553720551

Raceview King

Raceview Gladiator

Kilmichael Diamond

Corbally Katie

Kealod Desmond

Corbally Hannah



Star Rating (Within Simmental breed)	Economic Indexes	€uro value per progeny	Index Reliability	Star rating (across all beef breeds)
	Terminal Index	€95	46% (Average)	
★★★★★	Replacement Index Maternal Cow Traits : Maternal Progeny Traits :	€130 €71 €59	43% (Average) 42% 46%	★★★★★
	Dairy Beef			

Star Rating (Within Simmental breed)	Key profit traits	Index Value	Trait Reliability	Star rating (across all beef breeds)
Expected progeny performance				
	Calving difficulty (% 3 & 4) Breed ave: 5.27%,All breeds ave: 4.49%	+7.4%	50% (Average)	
★★★★★★	Docility (1-5 scale) Breed ave: 0.05,All breeds ave: 0.01	0.12 scale	48% (Average)	★★★★★★
★★★★★★	Carcass weight (kg) Breed ave: 21.75kg,All breeds ave: 15.99kg	+31kg	47% (Average)	★★★★★★
★★★★★★	Carcass conformation (1-15 scale) Breed ave: 1.36,All breeds ave: 1.38	+1.58 scale	47% (Average)	★★★★★

Expected daughter breeding performance				
	Daughter calving diff (% 3 & 4) Breed ave: 5.85%,All breeds ave: 5.83%	+5.59%	41% (Average)	
★★★★★★	Daughter Milk (kg) Breed ave: 8.23kg,All breeds ave: 2.14kg	+10.7kg	45% (Average)	★★★★★★
★★★★★	Daughter calving interval (days) Breed ave: -0.06days,All breeds ave: -0.79days	-0.76days	38% (Low)	★★★

Additional Information:

Another Vintage Katie daughter by Bantry. A really stylish heifer with stars and figures. Probably the last Vintage Katie daughter to sell- worth a look. Has all the potential and breeding to be a quality breeder

Linear composites	Value	Reliability
Muscle		
Skeletal		
Function		

Herd data quality index

N/A

Animal not scored.

Lot 6 CORBALLY GODDESS ET

ID: IE151553770762

Breed: Simmental

Sex: Female

DOB: 01-Jan-2015

Owner: James And Fiona Browne - Corbally Glanworth Co. Cork

Breeder:

Sire: Hillcrest Champion
HCC

Gretna House
Supersonic

Heywood Esquire
Cheston Katie

Camus Solitaire

Siegfried
Star Fanny

Dam: Corbally Vintage Katie (Et)
IE151553720551

Raceview King

Raceview Gladiator
Kilmichael Diamond

Corbally Katie

Kealod Desmond
Corbally Hannah



Star Rating (Within Simmental breed)	Economic Indexes	€uro value per progeny	Index Reliability	Star rating (across all beef breeds)
	Terminal Index	€113	51% (Average)	
★★★★★	Replacement Index Maternal Cow Traits : Maternal Progeny Traits :	€143 €67 €76	50% (Average) 49% 51%	★★★★★
	Dairy Beef			

Star Rating (Within Simmental breed)	Key profit traits	Index Value	Trait Reliability	Star rating (across all beef breeds)
Expected progeny performance				
	Calving difficulty (% 3 & 4) Breed ave: 5.27%,All breeds ave: 4.49%	+5.4%	49% (Average)	
★★★★★	Docility (1-5 scale) Breed ave: 0.05,All breeds ave: 0.01	0.15 scale	65% (High)	★★★★★
★★★★★	Carcass weight (kg) Breed ave: 21.75kg,All breeds ave: 15.99kg	+30kg	55% (Average)	★★★★★
★★★★★	Carcass conformation (1-15 scale) Breed ave: 1.36,All breeds ave: 1.38	+1.63 scale	50% (Average)	★★★★★

Expected daughter breeding performance				
	Daughter calving diff (% 3 & 4) Breed ave: 5.85%,All breeds ave: 5.83%	+4.31%	48% (Average)	
★★	Daughter Milk (kg) Breed ave: 8.23kg,All breeds ave: 2.14kg	+7.2kg	53% (Average)	★★★★★
★★★	Daughter calving interval (days) Breed ave: -0.06days,All breeds ave: -0.79days	-0.34days	45% (Average)	★★★

Additional Information:

Our pet on the farm. Goddess has given us many great days out on the show circuit and has such a lovely temperament. A Hillcrest Champion daughter out of our Vintage Katie cow, the breeding had worked well for us, winning us several overall Championships. And shes got the the Stars and figures to back it all up

Linear composites	Value	Reliability
Muscle	119	56%
Skeletal	119	54%
Function	114	30%

Herd data quality index

N/A

Animal scored. Linear scores and weaning weights in evaluations

Lot 7 CORBALLY VINTAGE KATIE (ET)

ID: IE151553720551

Breed: Simmental

Sex: Female

DOB: 08-Sep-2007

Owner: James And Fiona Browne - Corbally Glanworth Co. Cork

Breeder:

Sire: Raceview King
REV

Raceview Gladiator

Brinkton Brilliant
Raceview Beauty

Kilmichael Diamond

Manitoba Spartan
Kilmichael Sultana

Dam: Corbally Katie
IE151553770192

Kealod Desmond

Sacombe Edgar
Glendine Tena

Corbally Hannah

Mount Royal Western
Castleloma Dawn



Star Rating (Within Simmental breed)	Economic Indexes	€uro value per progeny	Index Reliability	Star rating (across all beef breeds)
	Terminal Index	€101	64% (High)	
★★★★★★	Replacement Index Maternal Cow Traits : Maternal Progeny Traits :	€148 €85 €63	58% (Average) 56% 64%	★★★★★★
	Dairy Beef			

Star Rating (Within Simmental breed)	Key profit traits	Index Value	Trait Reliability	Star rating (across all beef breeds)
Expected progeny performance				
	Calving difficulty (% 3 & 4) Breed ave: 5.27%,All breeds ave: 4.49%	+7.5%	65% (High)	
★★★★★★	Docility (1-5 scale) Breed ave: 0.05,All breeds ave: 0.01	0.17 scale	72% (High)	★★★★★★
★★★★★★	Carcass weight (kg) Breed ave: 21.75kg,All breeds ave: 15.99kg	+30kg	71% (High)	★★★★★★
★★★★★★	Carcass conformation (1-15 scale) Breed ave: 1.36,All breeds ave: 1.38	+1.66 scale	67% (High)	★★★★★★

Expected daughter breeding performance				
	Daughter calving diff (% 3 & 4) Breed ave: 5.85%,All breeds ave: 5.83%	+4.26%	56% (Average)	
★★★★★★	Daughter Milk (kg) Breed ave: 8.23kg,All breeds ave: 2.14kg	+11.4kg	65% (High)	★★★★★★
★★★	Daughter calving interval (days) Breed ave: -0.06days,All breeds ave: -0.79days	-0.25days	48% (Average)	★★★

Additional Information:

Vintage is the backbone of our small pedigree herd and has consistently bred well for us year after year. A national champion herself, she has bred National champions and given us most enjoyable days in the show circuit with overall championships and interbreed wins. In calf to Cairnview Snazzy, a cross which has proven to work already with Vintages full sister Trona breeding a National Champion for Peter and Marion O Connell at

Raceview.
Animal scored. Linear scores and weaning weights in evaluations

Linear composites	Value	Reliability
Muscle	115	70%
Skeletal	120	68%
Function	123	35%

Herd data quality index

N/A

Lot 8 CORBALLY VIP KATIE (ET)

ID: IE151553710550

Breed: Simmental

Sex: Female

DOB: 07-Sep-2007

Owner: James And Fiona Browne - Corbally Glanworth Co. Cork

Breeder:

Sire: Raceview King
REV

Raceview Gladiator

Brinkton Brilliant
Raceview Beauty

Kilmichael Diamond

Manitoba Spartan
Kilmichael Sultana

Dam: Corbally Katie
IE151553770192

Kealod Desmond

Sacombe Edgar
Glendine Tena

Corbally Hannah

Mount Royal Western
Castleloma Dawn



Star Rating (Within Simmental breed)	Economic Indexes	€uro value per progeny	Index Reliability	Star rating (across all beef breeds)
	Terminal Index	€112	57% (Average)	
★★★★★	Replacement Index Maternal Cow Traits : Maternal Progeny Traits :	€150 €80 €70	55% (Average) 54% 57%	★★★★★
	Dairy Beef			

Star Rating (Within Simmental breed)	Key profit traits	Index Value	Trait Reliability	Star rating (across all beef breeds)
Expected progeny performance				
	Calving difficulty (% 3 & 4) Breed ave: 5.27%,All breeds ave: 4.49%	+7%	54% (Average)	
★★	Docility (1-5 scale) Breed ave: 0.05,All breeds ave: 0.01	0.02 scale	60% (High)	★★★
★★★★★	Carcass weight (kg) Breed ave: 21.75kg,All breeds ave: 15.99kg	+34kg	64% (High)	★★★★★
★★★★★	Carcass conformation (1-15 scale) Breed ave: 1.36,All breeds ave: 1.38	+1.74 scale	61% (High)	★★★★★

Expected daughter breeding performance				
	Daughter calving diff (% 3 & 4) Breed ave: 5.85%,All breeds ave: 5.83%	+4.26%	55% (Average)	
★★★★★	Daughter Milk (kg) Breed ave: 8.23kg,All breeds ave: 2.14kg	+10.9kg	63% (High)	★★★★★
★★★	Daughter calving interval (days) Breed ave: -0.06days,All breeds ave: -0.79days	+0.2days	47% (Average)	★★

Additional Information:

A full sister to Vintage, V.I.P. is another powerful cow. A National champion herself and she has also bred Eires V.I.P., National Calf Champion who was purchased by Kieran and Paul Mullarkey. Corbally Eires V.I.P.s first calf has also been a National champion and is now standing in Bova A.I. Station. Serious breeding behind this cow again and proving it with her progeny. Heifer calf Lot 9 will be sold separately

Linear composites	Value	Reliability
Muscle	112	60%
Skeletal	117	58%
Function	123	31%

Herd data quality index

N/A

Animal scored. Linear scores and weaning weights in evaluations

Lot 9 CORBALLY KERRYS VIP

ID: 372219885590877

Breed: Simmental

Sex: Female

DOB: 02-Oct-2018

Owner: James And Fiona Browne - Corbally Glanworth Co. Cork

Breeder:

Sire: Dermody Butcher
S1158

Hillcrest Butcher

Magheracrigan Special
Camus Solitare

Dermody Susie

Ballyduff Jeweller
Dermody Joy

Dam: Corbally Vip Katie (Et)
IE151553710550

Raceview King

Raceview Gladiator
Kilmichael Diamond

Corbally Katie

Kealod Desmond
Corbally Hannah

Star Rating (Within Simmental breed)	Economic Indexes	€uro value per progeny	Index Reliability	Star rating (across all beef breeds)
	Terminal Index	€79	33% (Low)	
★	Replacement Index Maternal Cow Traits : Maternal Progeny Traits :	€83 €41 €42	29% (Low) 27% 33%	★★★★
	Dairy Beef			

Star Rating (Within Simmental breed)	Key profit traits	Index Value	Trait Reliability	Star rating (across all beef breeds)
Expected progeny performance				
	Calving difficulty (% 3 & 4) Breed ave: 5.27%,All breeds ave: 4.49%	+9.2%	32% (Low)	
★★★★★★	Docility (1-5 scale) Breed ave: 0.05,All breeds ave: 0.01	0.12 scale	36% (Low)	★★★★★★
★★★★★★	Carcass weight (kg) Breed ave: 21.75kg,All breeds ave: 15.99kg	+30kg	37% (Low)	★★★★★★
★★★★★★	Carcass conformation (1-15 scale) Breed ave: 1.36,All breeds ave: 1.38	+1.6 scale	35% (Low)	★★★★★★

Expected daughter breeding performance				
	Daughter calving diff (% 3 & 4) Breed ave: 5.85%,All breeds ave: 5.83%	+4.31%	22% (Low)	
★★★	Daughter Milk (kg) Breed ave: 8.23kg,All breeds ave: 2.14kg	+8.6kg	34% (Low)	★★★★★★
★	Daughter calving interval (days) Breed ave: -0.06days,All breeds ave: -0.79days	+2.9days	18% (V Low)	★

Additional Information:

Heifer calf of Lot 8 will be sold separately. Kerrys three quarter sister Corbally Embrace was purchased privately by Tony and Ann Dukes, Swallow Hill Herd, U. K. This heifer has real potential and has the makings of a powerful cow

Linear composites	Value	Reliability
Muscle		
Skeletal		
Function		

Herd data quality index

N/A

Animal not scored.

Lot 10 CORBALLY KINGPIN

ID: 372219885580868

Breed: Simmental

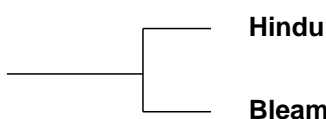
Sex: Male

DOB: 05-Sep-2018

Owner: James And Fiona Browne - Corbally Glanworth Co. Cork

Breeder:

Sire: Herkules
AS56



Hindu

Bleami

Haxl

Danila

Salamon
Burgl

Dam: Corbally Hope 2
IE151553760794



Milnafua Graduate

Corbally Dixie

Milnafua Diamond
Milnafua Barbie

Raceview King
Corbally Vixen

Star Rating (Within Simmental breed)	Economic Indexes	€uro value per progeny	Index Reliability	Star rating (across all beef breeds)
★★★	Terminal Index	€75	34% (Low)	★★
★★★★★	Replacement Index Maternal Cow Traits : Maternal Progeny Traits :	€128 €79 €49	32% (Low) 31% 34%	★★★★★
	Dairy Beef			

Star Rating (Within Simmental breed)	Key profit traits	Index Value	Trait Reliability	Star rating (across all beef breeds)
Expected progeny performance				
	Calving difficulty (% 3 & 4) Breed ave: 5.27%,All breeds ave: 4.49%	+5.3%	33% (Low)	
★★★	Docility (1-5 scale) Breed ave: 0.05,All breeds ave: 0.01	0.04 scale	37% (Low)	★★★★★
★★★	Carcass weight (kg) Breed ave: 21.75kg,All breeds ave: 15.99kg	+22kg	37% (Low)	★★★★★
★★	Carcass conformation (1-15 scale) Breed ave: 1.36,All breeds ave: 1.38	+1.24 scale	36% (Low)	★★

Expected daughter breeding performance				
	Daughter calving diff (% 3 & 4) Breed ave: 5.85%,All breeds ave: 5.83%	+5.65%	26% (Low)	
★★★★★	Daughter Milk (kg) Breed ave: 8.23kg,All breeds ave: 2.14kg	+11.4kg	35% (Low)	★★★★★
★★★	Daughter calving interval (days) Breed ave: -0.06days,All breeds ave: -0.79days	+0.01days	25% (Low)	★★

Additional Information:

Bull calf selling with Corbally Hope. Good Quality Bull. Has potential

Linear composites	Value	Reliability
Muscle		
Skeletal		
Function		

Herd data quality index

N/A

Animal not scored.

Lot 11 CORBALLY KUCCI GUCCI

ID: 372219885510878

Breed: Simmental

Sex: Female

DOB: 01-Nov-2018

Owner: James And Fiona Browne - Corbally Glanworth Co. Cork

Breeder:

Sire: Anatrium Bodybuilder
AYX

Anatrium Viva (Et)

Carnkern Titan
Anatrium Lucky Et

Anatrium Theresa

Anatrium Jacob
Anatrium Gorgeous

Dam: Corbally Gucci Vip
IE151553790789

Milnafua Graduate

Milnafua Diamond
Milnafua Barbie

Corbally Vip Katie
(Et)

Raceview King
Corbally Katie

Star Rating (Within Simmental breed)	Economic Indexes	€uro value per progeny	Index Reliability	Star rating (across all beef breeds)
	Terminal Index	€76	34% (Low)	
★★★★★	Replacement Index Maternal Cow Traits : Maternal Progeny Traits :	€123 €78 €45	30% (Low) 29% 34%	★★★★★
	Dairy Beef			

Star Rating (Within Simmental breed)	Key profit traits	Index Value	Trait Reliability	Star rating (across all beef breeds)
Expected progeny performance				
	Calving difficulty (% 3 & 4) Breed ave: 5.27%,All breeds ave: 4.49%	+7.2%	34% (Low)	
★★★★★	Docility (1-5 scale) Breed ave: 0.05,All breeds ave: 0.01	0.07 scale	39% (Low)	★★★★★
★★★★★	Carcass weight (kg) Breed ave: 21.75kg,All breeds ave: 15.99kg	+26.5kg	38% (Low)	★★★★★
★★★★★	Carcass conformation (1-15 scale) Breed ave: 1.36,All breeds ave: 1.38	+1.43 scale	37% (Low)	★★★

Expected daughter breeding performance				
	Daughter calving diff (% 3 & 4) Breed ave: 5.85%,All breeds ave: 5.83%	+4.74%	24% (Low)	
★★★★★	Daughter Milk (kg) Breed ave: 8.23kg,All breeds ave: 2.14kg	+10.7kg	34% (Low)	★★★★★
★★	Daughter calving interval (days) Breed ave: -0.06days,All breeds ave: -0.79days	+0.79days	19% (V Low)	★★

Additional Information:

Heifer calf selling with Corbally Gucci VIP

Linear composites	Value	Reliability
Muscle		
Skeletal		
Function		

Herd data quality index

N/A

Animal not scored.

This page is intentionally left blank